

# 01

## Floating Port – Riverside Park

Beale Street Landing – Memphis -TN - USA

PROJECTS / Coastal Developments



- Project and contract documents.
- Works supervision
- Workshop drawings



The floating dock is part of a park comprising a passenger terminal. The dock is also open to the general public as a promenade. ADA access is granted. The dock is operational year-round; this means a river fluctuation of 15 meters must be taken up by the design. The view and connection of the public with the river have been a priority of the design team. The river environment is present everywhere in the design concepts.

### DESIGN PARAMETERS

- Port suitable for both large vessels and small cruisers.
- The pier cannot obstruct the vision towards the river.
- The pier gives access to the general public, as an extension of the park.
- The pier is ADA accessible.
- The port is operational year-round.
- Evacuation is adequate to all expected services.
- **Project classified by A.B.S.**



#### Client

Riverfront Development Corporation,  
City of Memphis, Tennessee.

#### Project

RTN architects, Argentina.

#### Landscaping

Balmori Assoc., NY.

#### Consultants

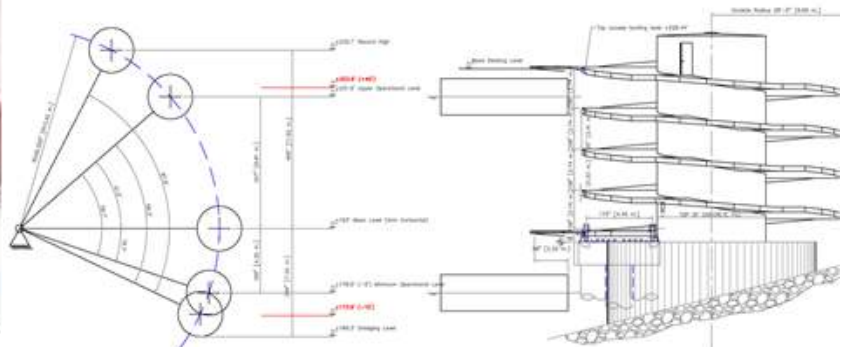
HAR port engineers.

EB hydraulic engineers.

Tecmap, automation & electricity

### RIVER FLUCTUATIONS

- Historical extremes.
- Day changes.







**Launching**

By hoisting with 1250 t crane.



**Machinery Room Structure.**

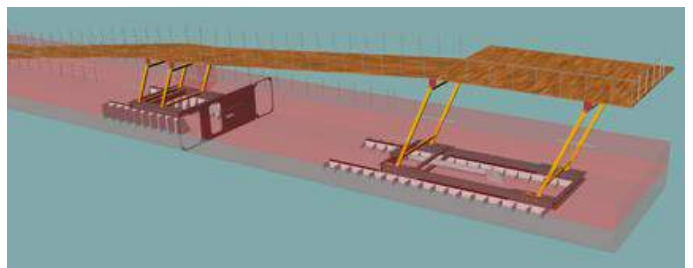
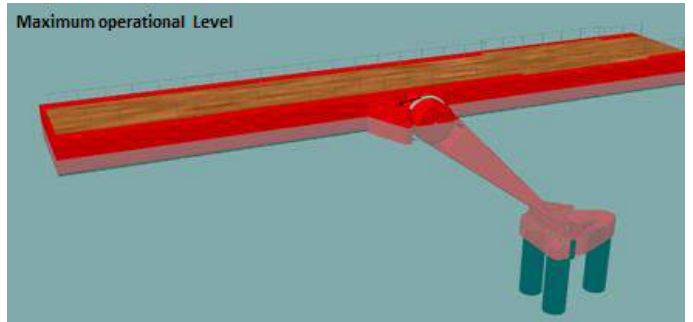


**First operation**

American Queen alongside the floating dock.

**Mooring Arm**

Clear the vision towards the river.



**Hydraulic Access Ramp.**

Height adjusted according to the river stage by means of a PLC, keeping the access to the helical ramp levelled and allowing access to the terminal building. Modal analysis carried out to check for possible resonance.

