

# 03

## Conversion into RO-RO & Passengers

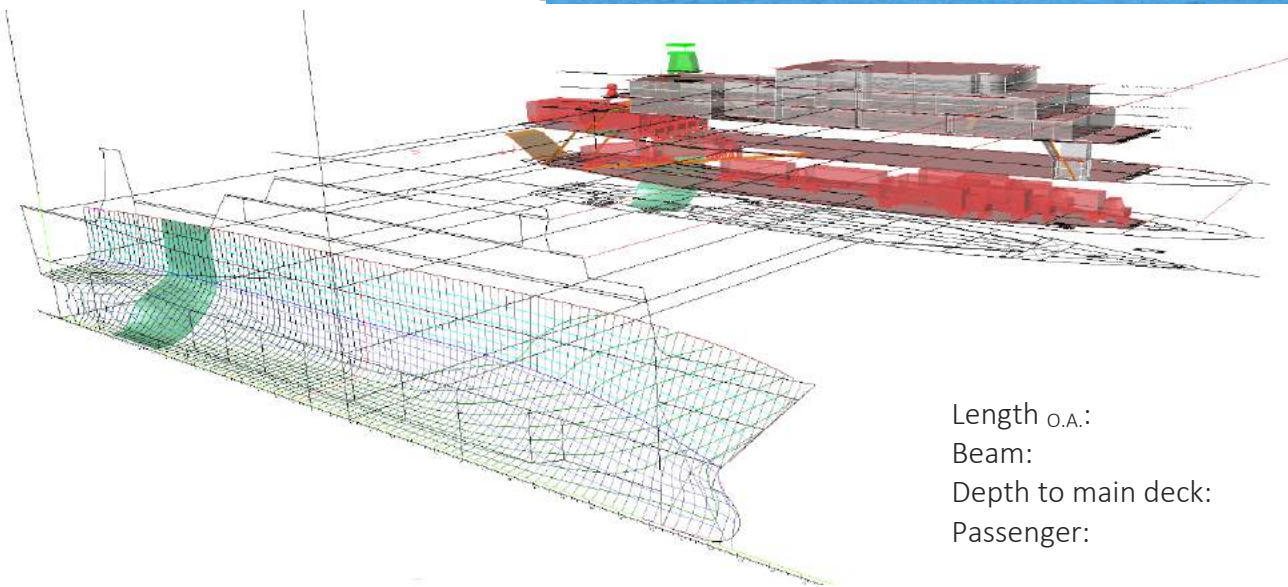
PROJECTS / Conversion



- Basic Design

Conversion of a pure RO-RO vessel into a RO-RO with capacity for 334 passengers, incorporating two new decks over the existent structures and preserving the capacity to load vehicles.

Consulmar was pioneer in the region in implementing the probabilistic approach for the calculation of stability (SOLAS Part B-1).



Length o.a.:	132,50 m
Beam:	21,00 m
Depth to main deck:	6,875 m
Passenger:	334

The addition of new decks for the passengers, was focused in the best and most rational employment of spaces, fulfilling at all times both the owner's requirements and the International Safety Regulations

The probabilistic damage stability calculations were implemented in full compliance with the revised SOLAS part B-1, in cooperation with the developers of the software. As a result of the study, it was established the need for the increase of the beam widening the vessel with new tanks which were incorporated in the structure design.

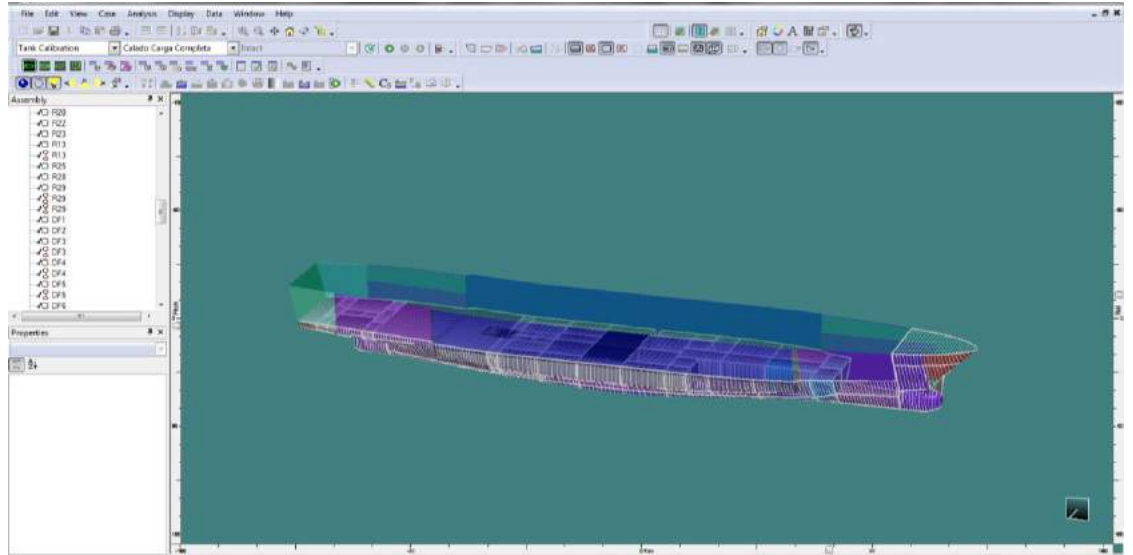
A new electric balance was prepared to upgrade the electric power to the new requirements.

The new structures were designed based on simple arrangements, easy to be constructed and erected, with minimum weight, perfectly integrated to the existent structures.

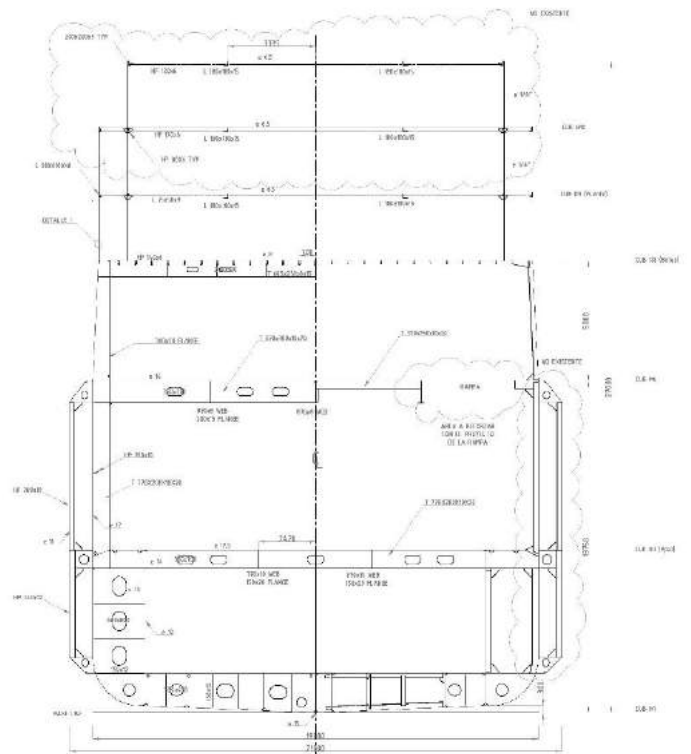
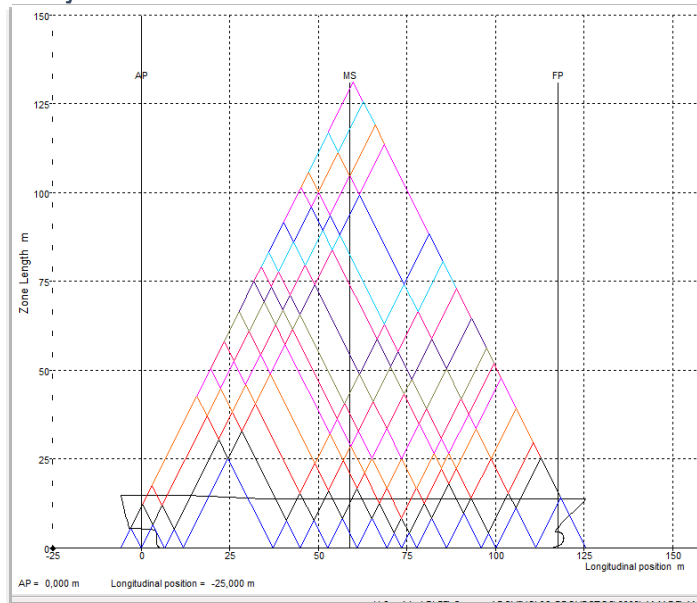


**Stability analysis model**

Specific software for probabilistic damage stability was employed as required by SOLAS part B-1.



**Result of the damage stability probabilistic analysis**



General Arrangement, projected

