

07

Floating Park

Saint Louis - Missouri - USA

PROJECTS / Coastal Developments



- Master Plan / Islands

The city required the development of a linear park between the iconic Saarinen Gateway Arch and the Mississippi river.

Balmori's proposal was to extend the park towards the river and improve the integration with it.

Client

City of Saint Louis and others.

Project

Balmori Associates, NY.

Arq. of Record

H.O.K. Plannig group, Saint Louis, MS.

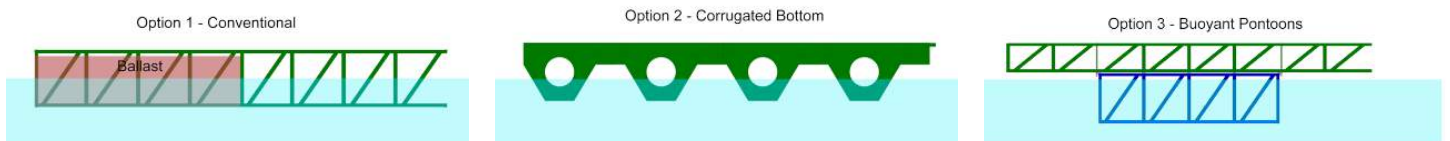
Consultants

Moffat & Nichols, port engineers

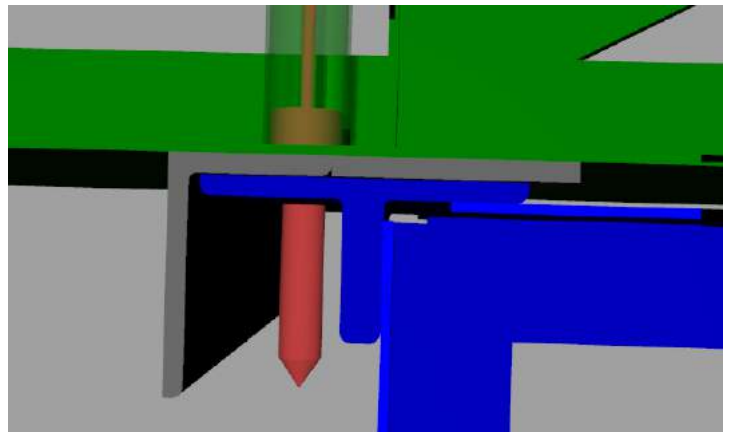
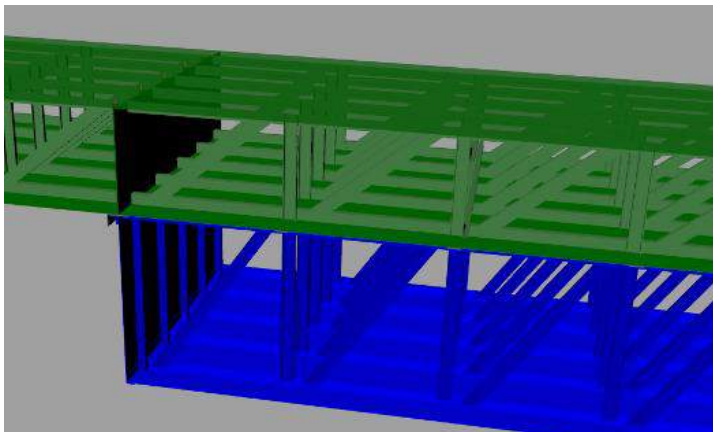
U.S. Army Corp of engineers, hydraulic advisors, and others.

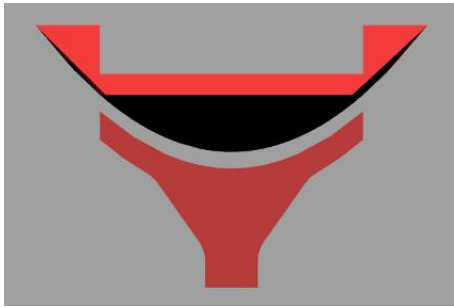


Several alternatives, both for materials and concept, were evaluated.

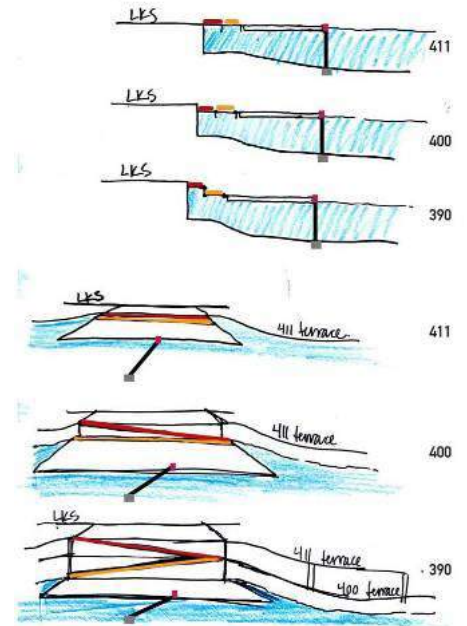
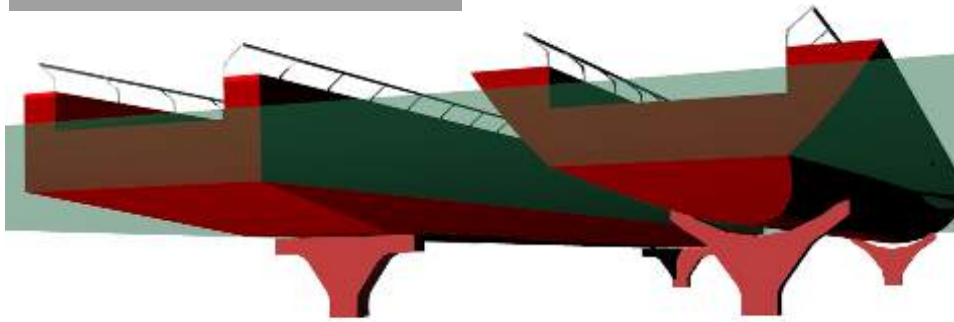


The option which prevailed considered a platform for the support of the utilities and independent buoyancy devices which allow their maintenance in situ, without dry docking. There is no disrupting of the park use, and very little costs.





On the same line, different access where evaluated, all accounting for the large river stage rise characteristic of this section of the Mississippi river.



Mississippi Jumbo RAKE barge

L = 195', B = 35', D = 12'.



An original active barrier to protect the islands from possible collisions of passing by convoys was conceived. This potential hazard was studied by modelling and simulation in the Paduka facilities.

