

10

Hoisting and Preparation for Ocean Passage of 1200 ton lightship vessel

Tug SINBAD – La Plata port - Argentina

HOISTING AND LASHING



- Control and adjustment of the hoisting project
- Supervision of the lashing and securing
- Issuance of the warranty certificate



The operation consisted in loading the tug over the heavy lifter with the vessel's own gear. Consulmar was required to issue a warranty certificate, for what the following was required:

- Check the vessel's operations manual.
- Inspect the tug.
- Incorporate our indications into the hoisting procedure instructions.
- Supervise the hoisting.
- Supervise the lashing and securing.



Securing the slings



The tug's hull was strategically reinforced (internally) to take the loads imposed by the slings.



The slings were strapped together to avoid overloaded points due to bucks and crushes.

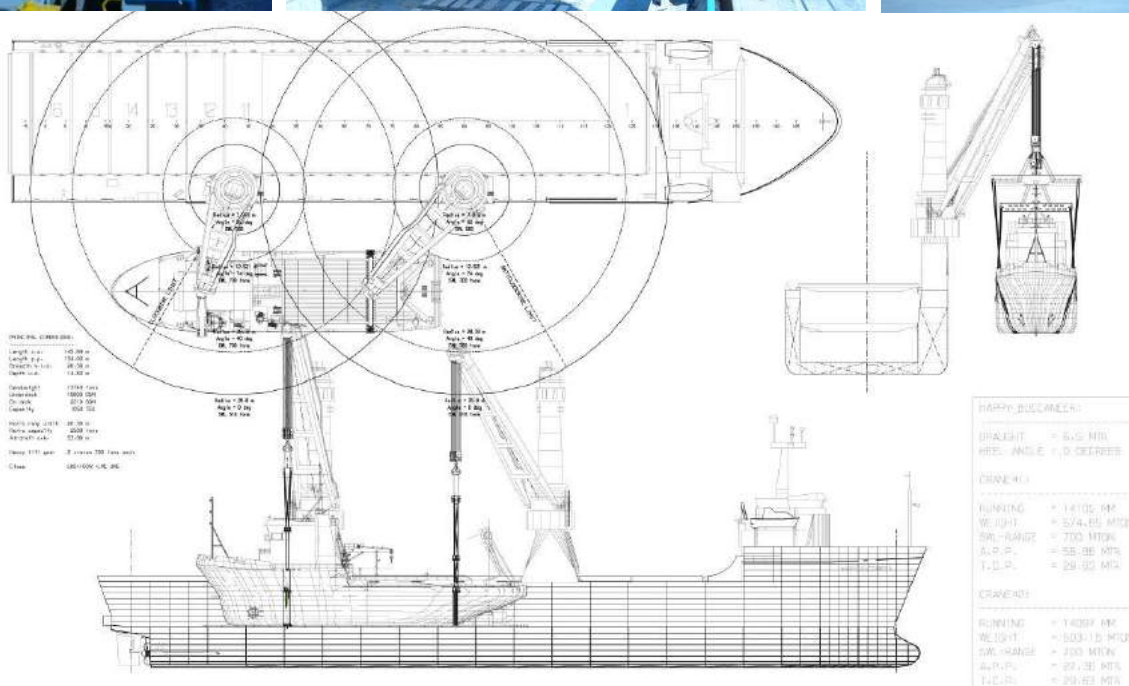




THE HOISTING



- All gear visually inspected.
- All loads checked by mean of load cells in each crane winch.
- The winding of the cables was checked by VC.
- The heel angle and ballast movement was remotely checked.



THE LASHING



- All calculations checked for the prevailing sea states in the passage.
- All lashing material was controlled.
- The securing and the lashing on board were checked.

