

19b Passenger vessel "GALÚ" - Conversion

CONVERSIONS / Direction of Works



- Advice for purchase and transportation to Ecuador
- Conversion Design
- Contract and Purchase Engineering
- Detailed survey
- Direction of Works

For the associated project, refer to Bulletin 19a.

We inspected the vessel in Italy, where she was acquired. It was prepared to be transported to Fort Lauderdale in a float on float off vessel, from there it went by her own means to Guayaquil.

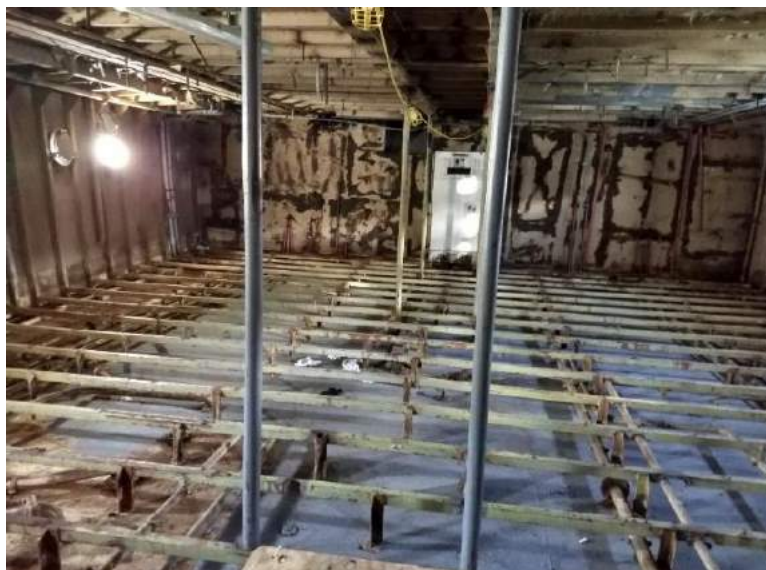
The conversion works are a challenge in itself; a very careful preparation was carried out. Complete specifications and drawings were issued, All the spaces were surveyed by means of laser 3D scanner in order to develop the detail engineering in our home base. The design included adding a new deck on top (see below) and 4 ocean view cabins in main deck. The works started in Guayaquil, but they are on hold due to the COVID19.



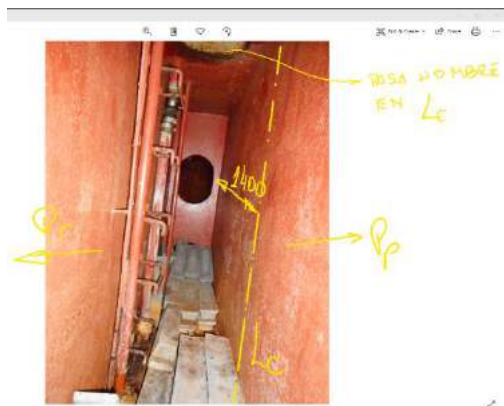
Vessel in Fort Lauderdale, where works started



Internal spaces stripped down



Working sketches

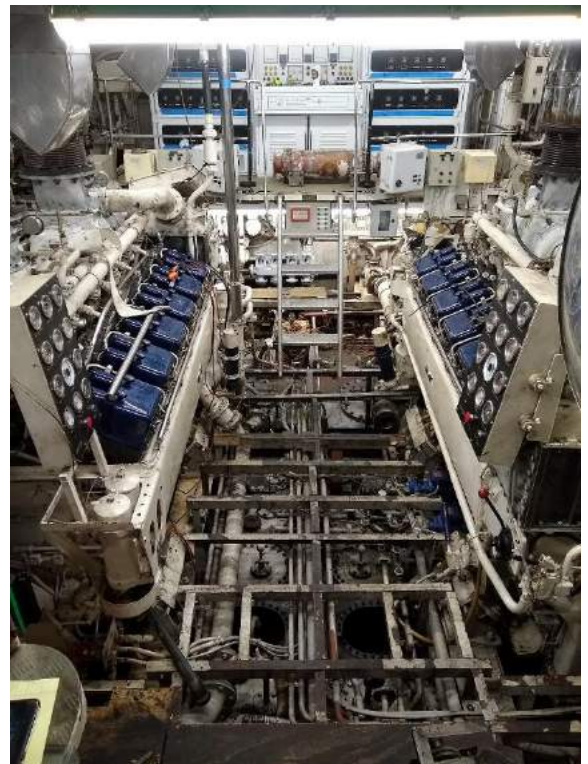




Machinery equipment being overhauled

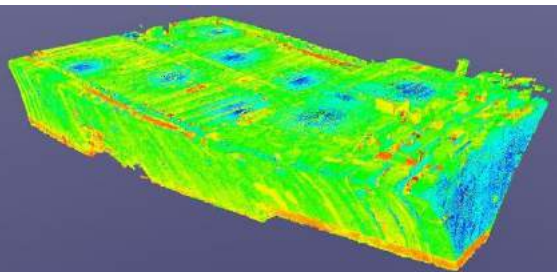


Tanks



Engine Room
Adapted to receive the new equipment necessary to serve the new number of passengers and crew members.

Laser scanning – Dots cloud



Aftend Area on Main Deck
The image is NOT a photo, it shows a cloud of points obtained by 3D laser scanning. Over the points, it is possible to measure the coordinates as it is illustrated in two points.