

20 Cruise ship "QUASAR"

DESIGN / Basic Design

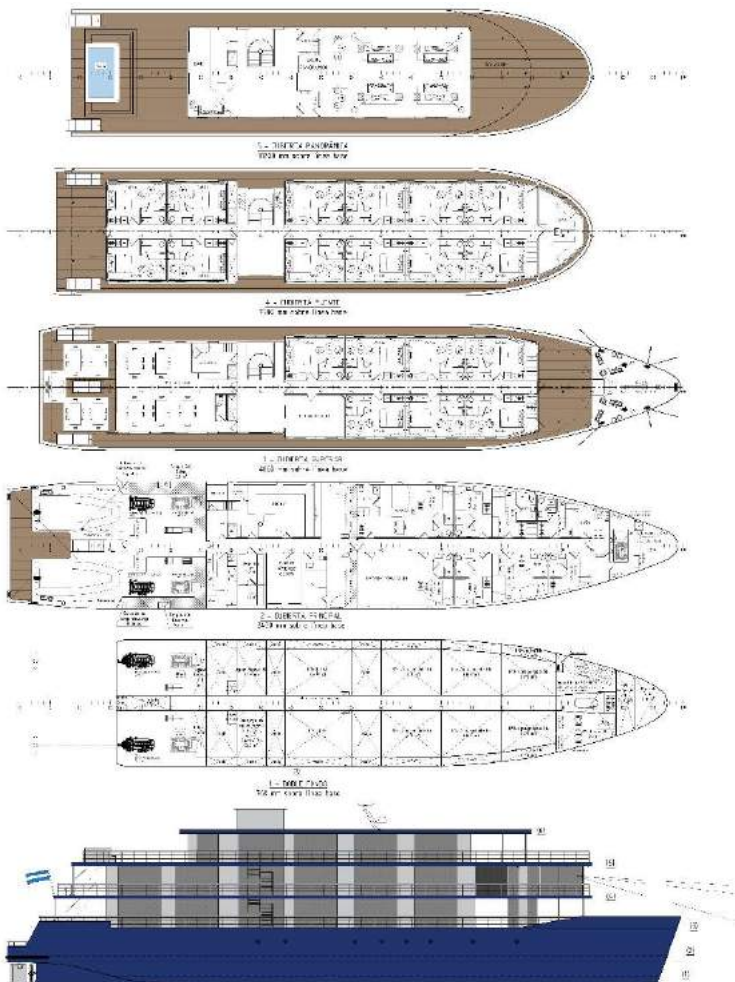


- Luxury passenger ship feasibility study
- Complete Basic Design
- Interior Design
- Costs evaluation
- Technical Specification for bidding

The Cruiser is designed for the transportation of passengers in the Paraná river, particularly in the upper section, between Corrientes and Iguazú.

The design complies with the high-quality standards required by the luxury cruising, like e. g. very careful finishing details, bounteous spaces, extremely silent operation, etc.

The preliminary design comprised Technical Specifications, Structural drawings, Geometry drawings, Main Systems, Stability Evaluation and Costs Assessment.



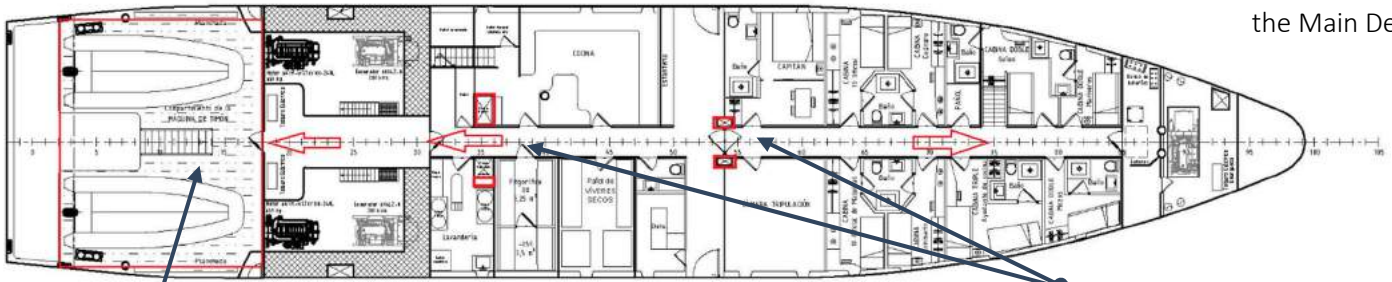
Length oa:	47,00 m
Beam:	10,50 m
Depth to main deck:	2,00 m
Passenger:	up to 30
Crew:	up to 12
Propulsion Power:	2x600 HP
Electric Power:	250 kW





SOME OUTSTANDING ASPECTS OF THE DESIGN

Minimum vibration and noises



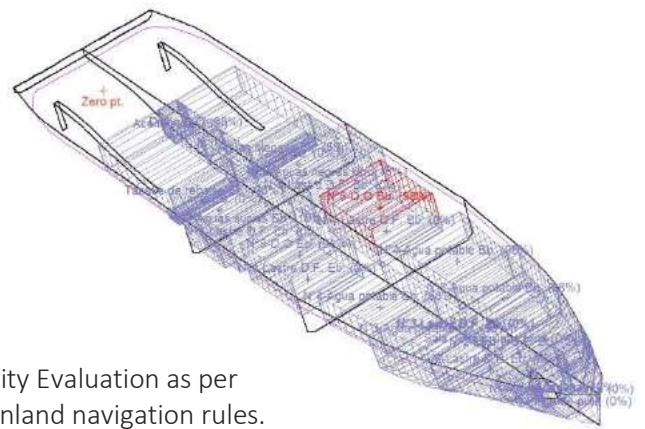
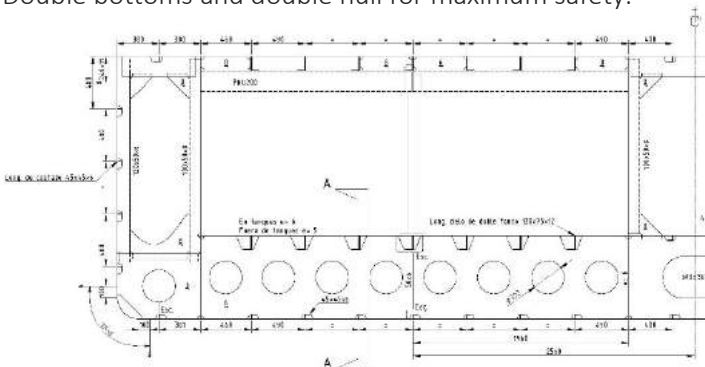
All services are concentrated below the Main Deck.

Tenders operation platform. The structure in way is quite critical. It was fully FEM developed.

Pipes, cables, etc are organized along a duct in the DB and then up through dedicated trunks for simplicity of construction.

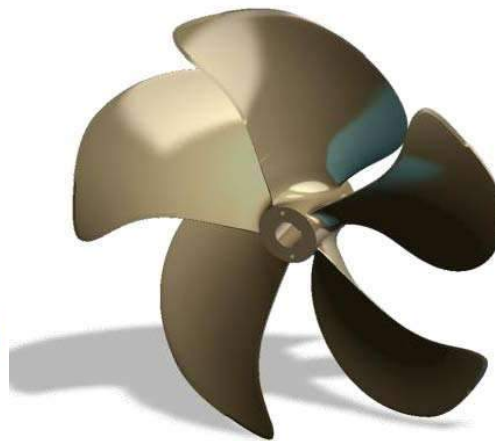
Safety of Navigation

Double bottoms and double hull for maximum safety.



Stability Evaluation as per new inland navigation rules.

Compact vertical axis Bow thruster suitable for low draughts and orientable 360° (VETH sketch).



High skew propellers for optimum efficiency, low vibrations and low cavitation.

3D modelling of internal and external spaces



Detailed study and design of internal and external areas.

